

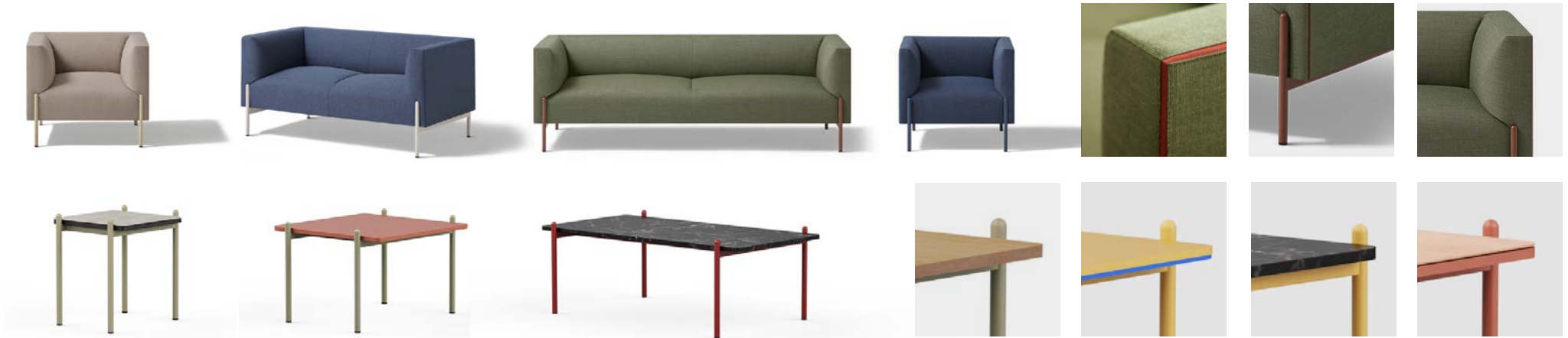
**esPatio**

**TECHNICAL FEATURES**

**AMIVERA**

By Jorge Herrera Studio





**Frame**

Steel structures formed by a rectangular central beam measuring 19.7”x11.8”x0.6” inches support the sofa, running lengthwise until reaching the transverse bars made of rectangular tubes. The crosspieces are capped with feet in a round steel tube 1” inch in diameter with a rounded finish.

**Seat**

Formed by a pine wood frame which serves as the frame for the steel pocket springs crossed by elastic straps which are the basis for the firmness of the seat and on which rests a generous polyurethane foam D102 lbs. /ft³ and 4.7” inches thick. The padded elements that complete the seat give it extraordinary comfort. The two and three-seater models incorporate a central seam.

**Armrests - backrest**

Monoblock assembly with interior structure in pine wood and MDF panel. The padded exterior faces provide a high-quality hand feel. Inwards, facing the user, the different combinations of polyurethane foam pieces, of different hardness and density, help us to obtain the best back support, all wrapped in a padded element that provides padding. The upholstery is characterized by colored piping that runs along the perimeter of the armrests and backrest.

**Tops**

- **Single wooden top:** 0.6” inch thick DM fiber board. Particleboard covered in natural european oak or single-colour lacquered wood.
- **Double wooden top:** DM fiber board. Particleboard covered in natural european oak or single-colour lacquered wood. Tabletop Thickness: 0.6” inch European oak upper board + 0.3” inch lacquered lower board / 0.5” inch lacquered upper board + 0.3” inch lacquered lower board.
- **Marble:** made up of a 0.8” inch thick natural marble top. Rounded edges and polished surface. Being a natural material, each cover is exclusive, having its own grain and tone. Available in Venato White and Marquina Black.
- **Dekton Tops:** it is the union of an upper surface composed of a sophisticated mixture of more than 20 minerals extracted from nature that result in an Ultra-Compact Technical Stone, and a lower bevelled base of lacquered particle board. Tabletop thickness: 0.2” inch Dekton+ 0.6” inch lacquered board.

## Packaging

The sofas are delivered in individual boxes, which protect them during the transport. The cardboard used is 100% recyclable.

## 5-year warranty

► [Warranty terms and conditions](#)

## Maintenance and cleaning of products

EsPattio provides recommendations to the user so that their products always look new and in excellent condition.

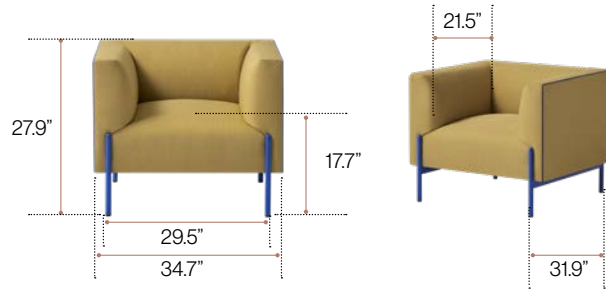
As a general rule, we recommend the use of environmentally friendly cleaning agents. Please follow the cleaning product manufacturer's instructions.

► [Information](#)

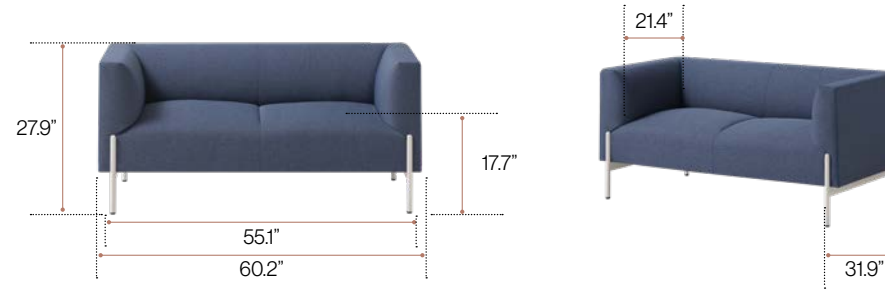
Dimensions

in

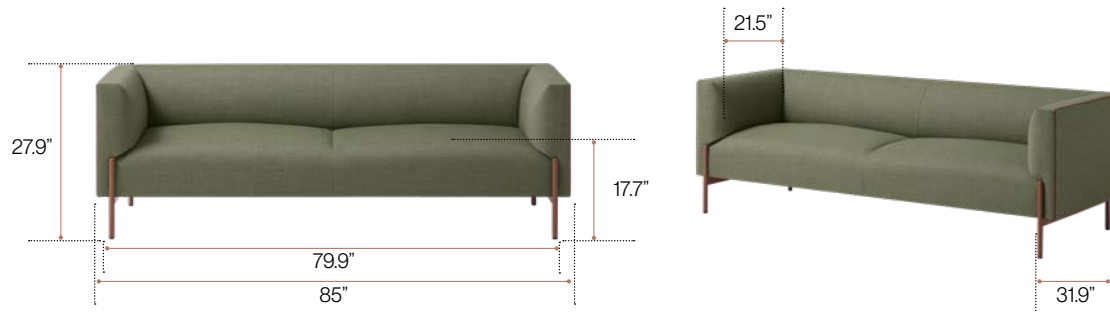
1 seater sofa



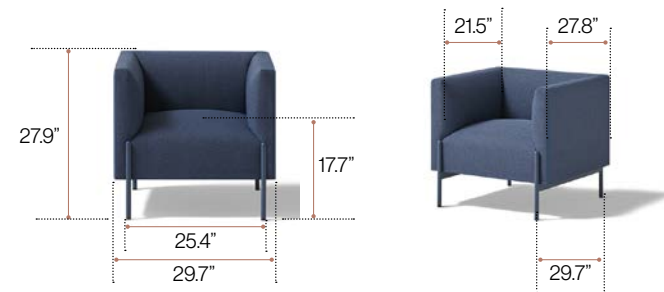
2 seater sofa






3 seater sofa



Narrow armchair



	lbs			
1 seater sofa	86 lbs	17.80 ft <sup>3</sup>	1	3.9 yd
2 seater sofa	129 lbs	30.97 ft <sup>3</sup>	1	5.9 yd
3 seater sofa	155 lbs	43.75 ft <sup>3</sup>	1	7.3 yd
Narrow armchair	72 lbs	13 ft <sup>3</sup>	1	3.5 yd

These minimum and maximum dimensions depend on the chosen configuration. Please consult if specific values are required.

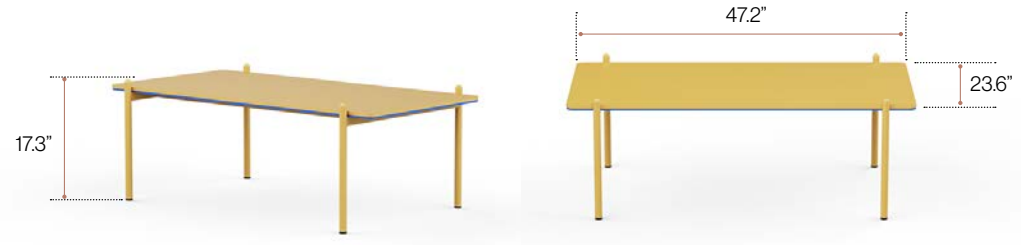
Dimensions

in

Square table



Rectangle table



	Square table, 15.8"x15.8" inches, h:19.3 inches			Square table, 23.6"x23.6" inches, h:17.3" inches			Rectangle table, 47.2"x23.6" inches, h:17.3" inches		
	lbs	3 ft³	□	lbs	3 ft³	□	lbs	3 ft³	□
Single top, Wooden or lacquered top	20	3 ft³	1	24	3 ft³	1	30	4 ft³	1
Marble top, wooden legs	21	3 ft³	1	27	3 ft³	1	31	4 ft³	1
Marble top, forge legs	36	3 ft³	1	61	3 ft³	1	106	4 ft³	1
Wooden top, forge legs	23	3 ft³	1	32	3 ft³	1	46	4 ft³	1

## Life cycle analysis



Raw Materials	lbs	%
<b>Upholsteries / Filling materials</b>	<b>81.66</b>	<b>52.63</b>
<b>Wood</b>	<b>49.10</b>	<b>31.65</b>
<b>Steel</b>	<b>23.83</b>	<b>15.36</b>
<b>Plastics</b>	<b>0.55</b>	<b>0.36</b>

**% Recycled Mat.= 48%**  
**% Recyclable Mat.= 67.99%**

## Ecodesign

Results reached during the life cycle stages

### Materials

- Steel: 15%-99% recycled material.
- Wood: 70% of the wood material is recycled, has PEFC/FSC and complies within the E1 standard.
- Plastic: 30%-40% recycled material.
- Powder painting without COV emissions.
- Staff material without HCFC and certified by Okotext.
- Upholsteries without COV emissions and certified by Okotext.
- Packings: 100% recyclable with inks with no solvents.

### Production

- Raw materials use optimization. Board, upholstery and steel tubes cut.
- Renewable energies use, reducing the CO2 emissions (Photovoltaic pannels).
- Energy saving measures in all production process.
- COV global emission reduction of the production processes by 70%.
- Powder painting recovery of 93% of the non deposited painting.
- Glue removal from the upholstery.
- The facilities have an internal sewage for liquid waste.
- Green points at the factory.
- 100% waste recycling at production process ans dangerous waste special treatment.

### Transport

- Cardboard use opmitization of the packings.
- Cardboard and packing materials use reduction.
- Flat packings and small bulks to optimize the space.
- Solid waste compacter which reduces transport and emissions.
- Light volumes and weights.
- Transport fleet renewal reducing by 28% the fuel consumption.
- Suppliers area reduction. Local market power and less pollution at transport.

### Use

- Easy maintenance and cleaning without solvents.
- esPattio guarantee.
- The highest quality for materials to provide a 10 year average life of the product.
- Useful life optimization of the product due to a standardized and modular design.
- The boards with no E1 particle emission.

### End life

- Easy unpacking for the recyclability or compound reuse.
- Piece standarization for the use.
- Recycled materials used for products (% recyclability):
- Aluminium is 100% recyclable. Steel is 100% recyclable. Wood is 100% recyclable. Plastics are from 70 to 100% recyclable.
- With no air or water pollution while removing waste.
- Returnable, recyclable and reusable packing.

## Maintenance and cleaning guide

Lines for a correct cleaning and maintenance considering the different materials:

### Fabrics

- ① Vacuum often.
- ② Rub the dirty spot with a wet cloth with PH neutral soap. Test first on a hidden spot.
- ③ Dry foam for carpets can be alternatively used.

### Wooden - melamine pieces

- ① Rub the dirty spot with a wet cloth with PH neutral soap. Test first on a hidden spot.
- ② Do not use abrasive products under any circumstances.

### Metal pieces

- ① Rub the dirty spot with a wet cloth with PH neutral soap. Test first on a hidden spot.
- ② Polished aluminum parts can be restored with polish on a dry cotton cloth to restore their initial gloss conditions.

### Plastic pieces

- ① Rub the dirty spot with a wet cloth with PH neutral soap. Test first on a hidden spot.
- ② Do not use abrasive products under any circumstances.

### Dekton pieces

- ① Apply neutral soap to the affected area and gently rub in a circular motion with a damp microfibre cloth.
- ② Leave to work for a couple of minutes. Then, with a cloth, wipe off any soap residue. Finally, dry it with kitchen roll.

### Marble pieces

- ① Apply neutral soap to the affected area and gently rub in a circular motion using a damp microfibre sponge.
  - ② Dry with a clean cloth to avoid leaving limescale particles.
- Do not use abrasive products.
  - Do not use abrasive sponges or hard brushes.